

## TOPS Pro ADO 6.8x Network Install Instructions

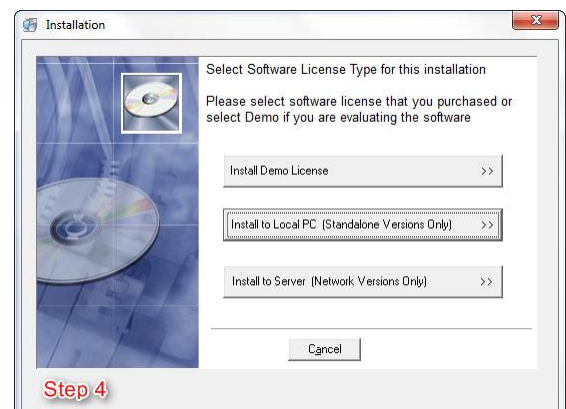
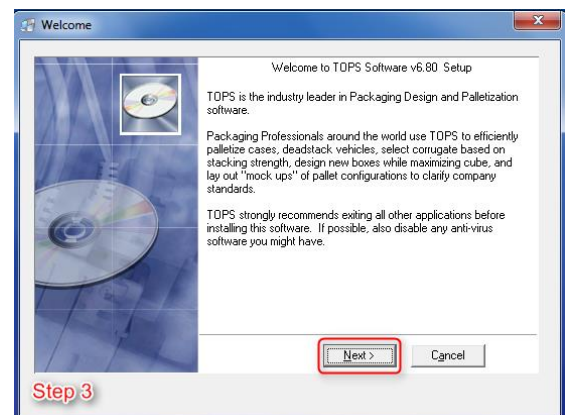
### Important Notes

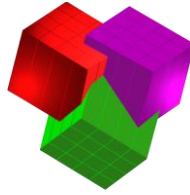
Before beginning, PLEASE READ the following:

- If you are **upgrading** from a previous version of the software, please refer to the **Data Migration document for details before performing this install.**
- Confirm you have **sufficient rights** (Read/Write/Execute) to install the software to the network location that has been allocated for the application. If you are unsure if you have sufficient rights, please contact your IT department.
- You **MUST** contact TOPS via phone or email to complete the license setup. If you are installing a Demo, you can contact TOPS via phone or email for a temporary Demo activation code.

### A. Begin Installation

1. Please close all applications.
2. Insert CD and run **TOPS\_Setup\_ADO.EXE**. If you were sent a link to install the software, please unzip those files and run the .exe from the unzipped directory.
3. An install wizard will appear with the **TOPS Pro Setup Welcome** screen. Continue by clicking on the **Next** button.
4. At the **Installation** dialog box, select **Install to Server**:
  - **Demo License** – to install a trail demo. A temp license with a limited number of executions/days will be provided.
  - **Install to Server** – to install a Network license you purchased (as indicated on the CD cover or literature sent). Be sure you start the installation from a client machine as you will point the installation of the software's files to the network location.





5. **Select Software Module** to install listed on the CD cover or referenced in your purchase of sale information:

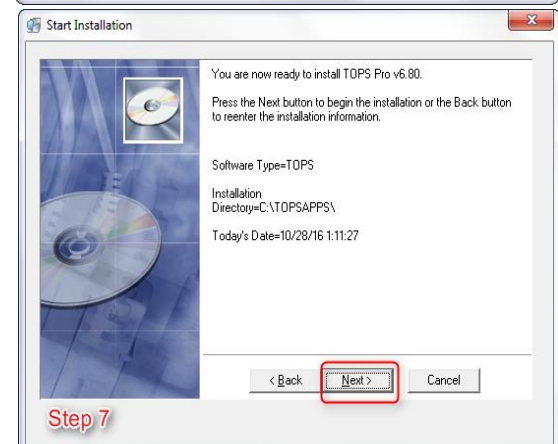
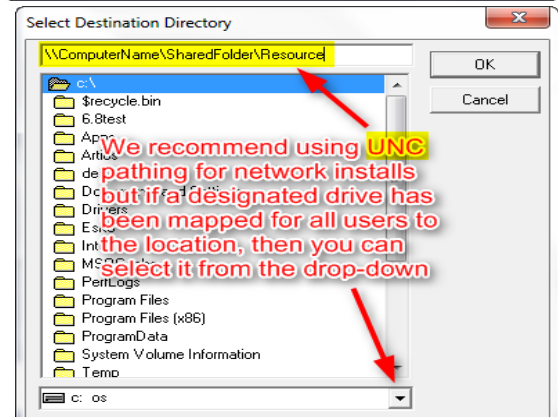
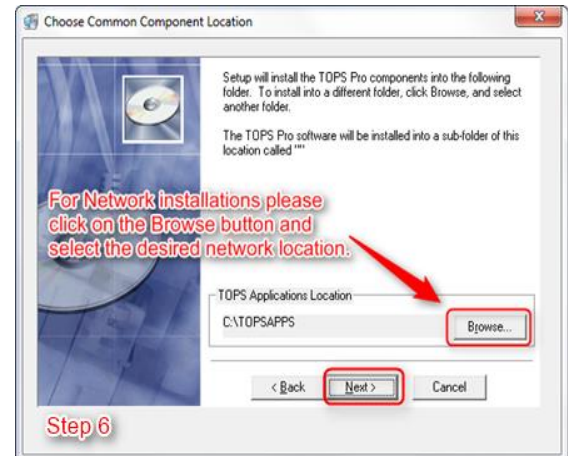
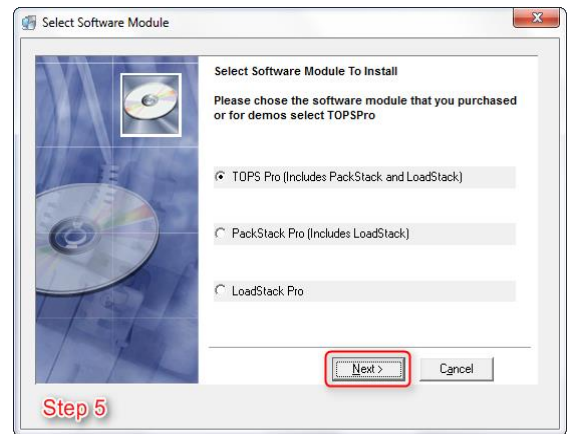
**TOPS Pro** – Full TOPS Pro optimization solution (includes PackStack and LoadStack functionality).

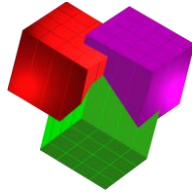
6. **Choose Common Component Location** of where the software will be installed to:

- **Network License** – Click the Browse button to select the desired network location.
- We strongly recommend using a UNC path for the software install but the option of selecting a mapped drive from the drop-down is still available.
- **If you are installing your network license on Citrix or a Terminal Server, please stop the install at this point and contact our tech support for more details and options on installing to these environments.**
- Click **Next** to proceed.

7. **Start Installation** after confirmation of the component location by clicking **Next**.

- From this point on, you will see a series of dialog boxes indicating the progress of installation. When the process is complete, you will see the screen with the message “TOPS for Windows has been successfully installed”.
- When applicable click “Finish” to exit TOPS setup.

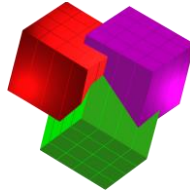




## **B. Create and Setup a New TOPS Database**

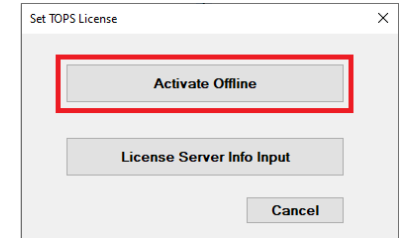
1. **In SQL Server** (using MS SQL Management studio or your preferred tool)
  1. Make sure SQL server security is configured for “SQL Server and Windows Authentication Mode”
  
2. **Create a new database called “TOPSDB”**
  
3. **Run the following scripts (in this order)** to create SQL user login, database tables, and setup base data (these scripts can be found under the folder: \TOPSAPPS\TOPSPro\_680\ADOSetup)  
**These scripts are written based on a database name of “TOPSDB.” If you would like to use a different database name, you will need to modify the text of these scripts.**
  1. **CreateLogin.sql**
    - Creates login which TOPS Pro will use to connect to SQL Server
  2. **CreateTables.sql**
    - Creates all required database tables, indexes, and constraints
  3. **BaseData.sql**
    - Populates database with required base data
  
4. **Configure db.ini** (location: \TOPSAPPS\TOPSPro\_680\db.ini)
  1. Set all the fields as needed to match database settings (**Database, user, password**).
  2. Note “**Provider=**” field below—
    - If using **TLS 1.0/1.1**, set **Provider=SQLOLEDB**
    - If using **TLS 1.2/1.3**, set **Provider=MSOLEDBSQL**

```
[Database]
Provider=MSOLEDBSQL
Server=<enter the SQLServer name>
Database=TOPSDB
user=tops
password=tops software
```



## C. Starting TOPS and License Setup

When you launch the application for the first time you will see the **Set TOPS License** dialog box. (You may see an initial prompt with options for **Activate Offline** or **License Server Info Input**. If you see this prompt, please click **Activate Offline**.)



To set the license, please call **972-739-8677** or email [tech@topseng.com](mailto:tech@topseng.com). The following information is required for us to provide a valid Verification Code when you call or email:

- **Company Name** – the company name that you'd like to appear in all reports from TOPS Pro.
- **Serial Number** – the serial number on the CD used for the installation or present in the literature sent with the purchase of your license, **NOT** the generic serial number in this dialog box.
- **The Key** from the **Set TOPS License** dialog box. This number will be unique to the machine that the install was done to.
- **Verification Code** – this will be provided by us and can only be generated with the aforementioned information given.
- **System Defaults** – This is also the screen where you can set system defaults for Language and Units of Measure.

When you receive the Company Name, Serial Number and Verification Code, please enter them **EXACTLY** as provided. Then click the **Apply** button. If all information is entered correctly, you should see a message saying “License Successfully Set”.

## D. Client Setup (Wansetup Process)

All users should have Full Control (Read, Write, Modify, and Execute rights) access to the TOPSAPPS directory on the network and sufficient rights on the workstation you wish to setup the software on.

1. Permanently map a network drive from the client machine to the network share OR use the same UNC path used during installation (if applicable) to get to the location of where TOPS Pro was installed.
2. Browse across the network share to the **TOPSPro\_680** directory and run the **WANSETUP.EXE** file.
3. WANSETUP will copy necessary files to local pc, and install any required redistributables (Microsoft Runtime, PDF writer etc). It will create the required shortcuts for the software and places those shortcuts in the **TOPS for Windows Apps** folder.
4. When wansetup completes browse to the ‘TOPS for Windows Apps’ directory under **Start → All Programs (All Apps in Win10)**. Here launch the “**TOPS Pro (WAN)**” shortcut to access the application.
5. Repeat this process on all TOPS users’ machines.

**You are now ready to start using the TOPS Pro application!**

TOPS® Software CORPORATION  
Total Optimization Packaging Systems  
[www.topseng.com](http://www.topseng.com)

Updated 2023